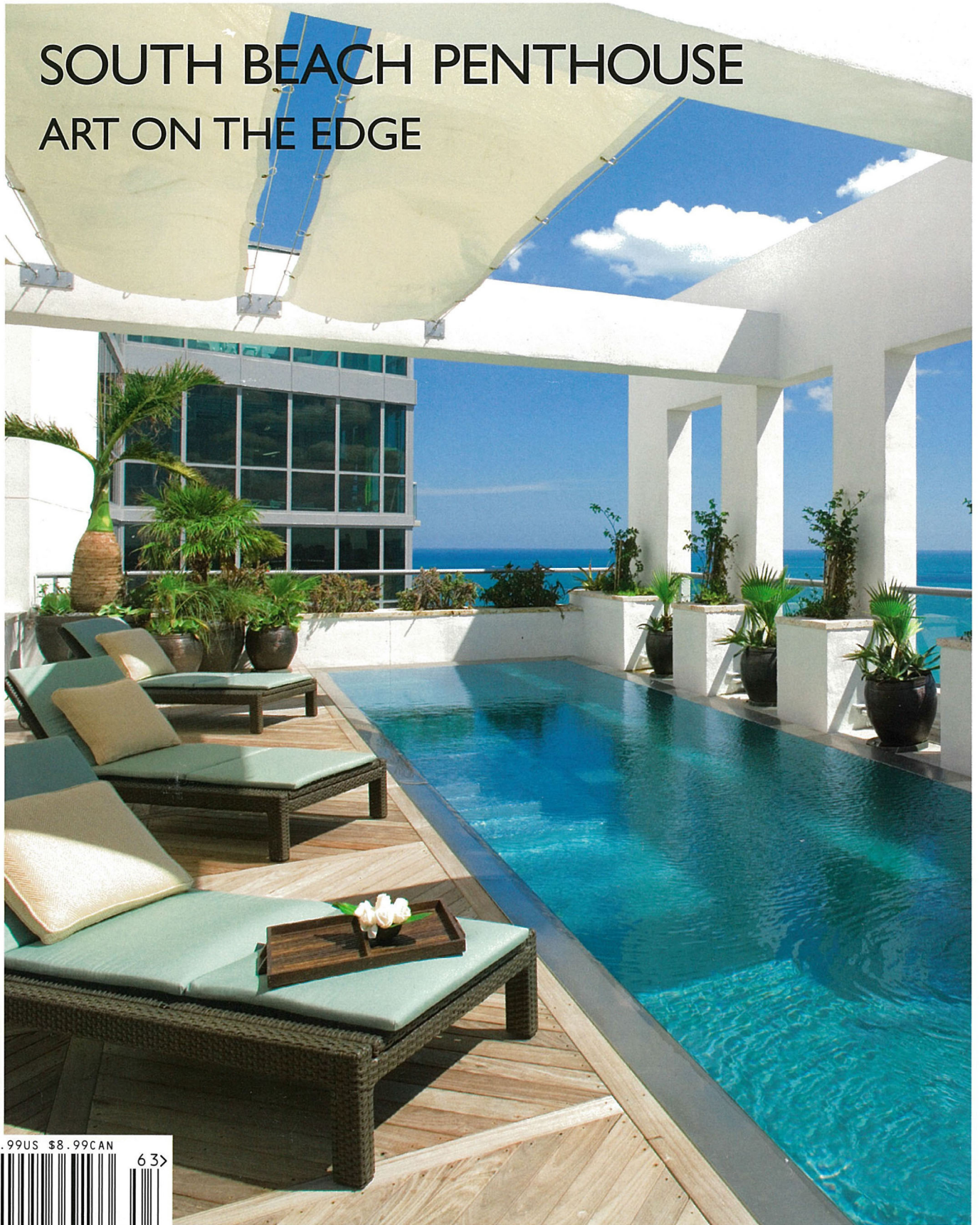


# FLORIDA DESIGN

THE MAGAZINE FOR FINE INTERIOR DESIGN & FURNISHINGS

VOLUME 16#3

## SOUTH BEACH PENTHOUSE ART ON THE EDGE



\$6.99US \$8.99CAN



Project featured in this article was designed by  
Peter Zimmerman Architects, Inc.  
John Toates, AIA was the Principle in Charge  
of Design for the project.



## SOURCES

### Rooftop Terrace and Pool Area

Furniture, cushions and pillows - Smania Home Collection, Inside/Out, DCOTA, Dania Beach, FL  
 Fountain wall - Custom designed by Forbes Design Consultants and Peter Zimmerman Architects, Inc., Berwyn, PA

Railing and canopy sails - Custom designed by Peter Zimmerman Architects, Inc., Berwyn, PA  
 Pool and Jacuzzi contractor, and fabrication for fountain wall and railing - Turner Construction Cos., Miami, FL  
 Sails fabricated by Awnings by Valrose, Miami, FL

Deck flooring - Quality Floor Covering, Inc., Wichita, KS

### Elevator Entry

Center table - Serban Furniture Design, Vita DeBellis, Marketplace Design Center, Philadelphia, PA  
 Light fixture - Illuminating Experiences, Inc., Jolo Enterprises, DCOTA, Dania Beach, FL  
 Artwork - Jamali Fine Art, LLC, Winter Park, FL  
 Area rug - Custom designed by Forbes Design Consultants, Berwyn, PA  
 Fabricated by Marc Phillips Decorative Rugs, Marketplace Design Center, Philadelphia, PA

### Music Room

Chairs - Michael Berman, Ltd., Los Angeles, CA  
 Cocktail table - Serban Furniture Design, Vita DeBellis, Marketplace Design Center, Philadelphia, PA  
 Piano - Steinway Piano Gallery, Coral Gables, FL  
 Wall lamps - J. Robert Scott Furniture, Jerry Pair & Associates, DCOTA, Dania Beach, FL  
 Area rug - Custom designed by Forbes Design Consultants, Berwyn, PA

Fabricated by Marc Phillips Decorative Rugs, Marketplace Design Center, Philadelphia, PA

### Living Room

Wood-framed sofas, club chairs and ottoman - A. Rudin Designs, J. Batchelor, DCOTA, Dania Beach, FL  
 Fabrics - Cowtan & Tout, Croce, Inc./Cowtan & Tout, Marketplace Design Center, Philadelphia, PA  
 Lounge chairs, ottomans and tiered cocktail table - Kravet, Marketplace Design Center, Philadelphia, PA  
 Wood-slab cocktail table and occasional table - Century Designer Showrooms, Marketplace Design Center, Philadelphia, PA  
 Sofa table - Daniel Scuderer Reproductions, DCOTA, Dania Beach, FL

Table lamp - George Kovacs Lighting, Jolo Enterprises, DCOTA, Dania Beach, FL  
 Plasma TV - Sound Components, Coral Gables, FL  
 Area rugs - Tufenkian Carpets, Marc Phillips Decorative Rugs, Marketplace Design Center, Philadelphia, PA

### Kitchen

Cabinetry - Custom designed by Forbes Design Consultants and Peter Zimmerman Architects, Inc., Berwyn, PA

Countertop and cabinetry fabricated by Cayman National Manufacturing and Installation, Inc., Deerfield Beach, FL

Appliances - SubZero, Thermador and Miele, Florida Builder Appliances, Pompano Beach, FL

### Phone Area

Banquette - Randolph & Hein Los Angeles, Pacific Design Center, Los Angeles, CA  
 Fabrics - The Designtex Group, Marketplace Design Center, Philadelphia, PA  
 Fabricated by LeJeune Upholstery & Fine Furniture, Miami, FL  
 Light fixture - Holly Hunt Miami, Miami, FL



A bed from Dessin Fournir makes a strong statement in the master suite, which opens to a sitting area, above.

Drapery and upholstered wall fabrics - Kravet, Marketplace Design Center, Philadelphia, PA  
 Artwork - The Robert Allen Group, DCOTA, Dania Beach, FL

Dining Room/Terrace

Table - L'Excellence Design, Inc., DCOTA, Dania Beach, FL  
 Chairs - Century Designer Showrooms, Marketplace Design Center, Philadelphia, PA  
 Fabric - Lee Jofa, Marketplace Design Center, Philadelphia, PA

Light fixtures - Illuminating Experiences, Inc., Jolo Enterprises, DCOTA, Dania Beach, FL

Wine wall - Custom designed by Peter Zimmerman Architects, Inc., Berwyn, PA  
 Fabricated by Cayman National Manufacturing and Installation, Inc., Deerfield Beach, FL

Area rug - Custom designed by Forbes Design Consultants, Berwyn, PA  
 Fabricated by Marc Phillips Decorative Rugs, Marketplace Design Center, Philadelphia, PA

Master Suite

Bed coverings and linens - kumi kokoon, Gardena, CA  
 Desk, accent pillows on bed and area rug - Custom

designed by Forbes Design Consultants, Berwyn, PA  
 Bench - Stewart Furniture Design, Inc., Fries, VA  
 Fabric - Zimmer + Rohde, Stamford, CT

Lounge chairs and accent pillows - Kravet, Marketplace Design Center, Philadelphia, PA

Lounge chair fabric - Brunswick & Fils, Marketplace Design Center, Philadelphia, PA  
 Chest and mirror - Henredon Furniture Industries, Robb & Stucky, Naples, FL

Table lamps - Minka Group, Robb & Stucky, Naples, FL

Wall covering - F. Schumacher & Co., Marketplace Design Center, Philadelphia, PA  
 Terrace furniture - Century Designer Showrooms, Marketplace Design Center, Philadelphia, PA

Master Suite Sitting Area

Sofa and accent pillows - Kravet, Marketplace Design Center, Philadelphia, PA  
 Sofa fabric - Lee Jofa, Marketplace Design Center, Philadelphia, PA

Tables - Henredon Furniture Industries, Baer's Furniture, Boca Raton, FL  
 Lamps - Robert Abbey, Inc., Kody Lighting, Wayne, PA

Area rug - Odegard, Inc., Persians, Ltd., Marketplace Design Center, Philadelphia, PA

Throughout

Millwork, molding and wood wall paneling - Cayman National Manufacturing and Installation, Inc., Deerfield Beach, FL

Windows - Barbara Gauthier Decor, Oxford, PA  
 Ceilings and doors - Custom designed by Peter Zimmerman Architects, Inc., Berwyn, PA

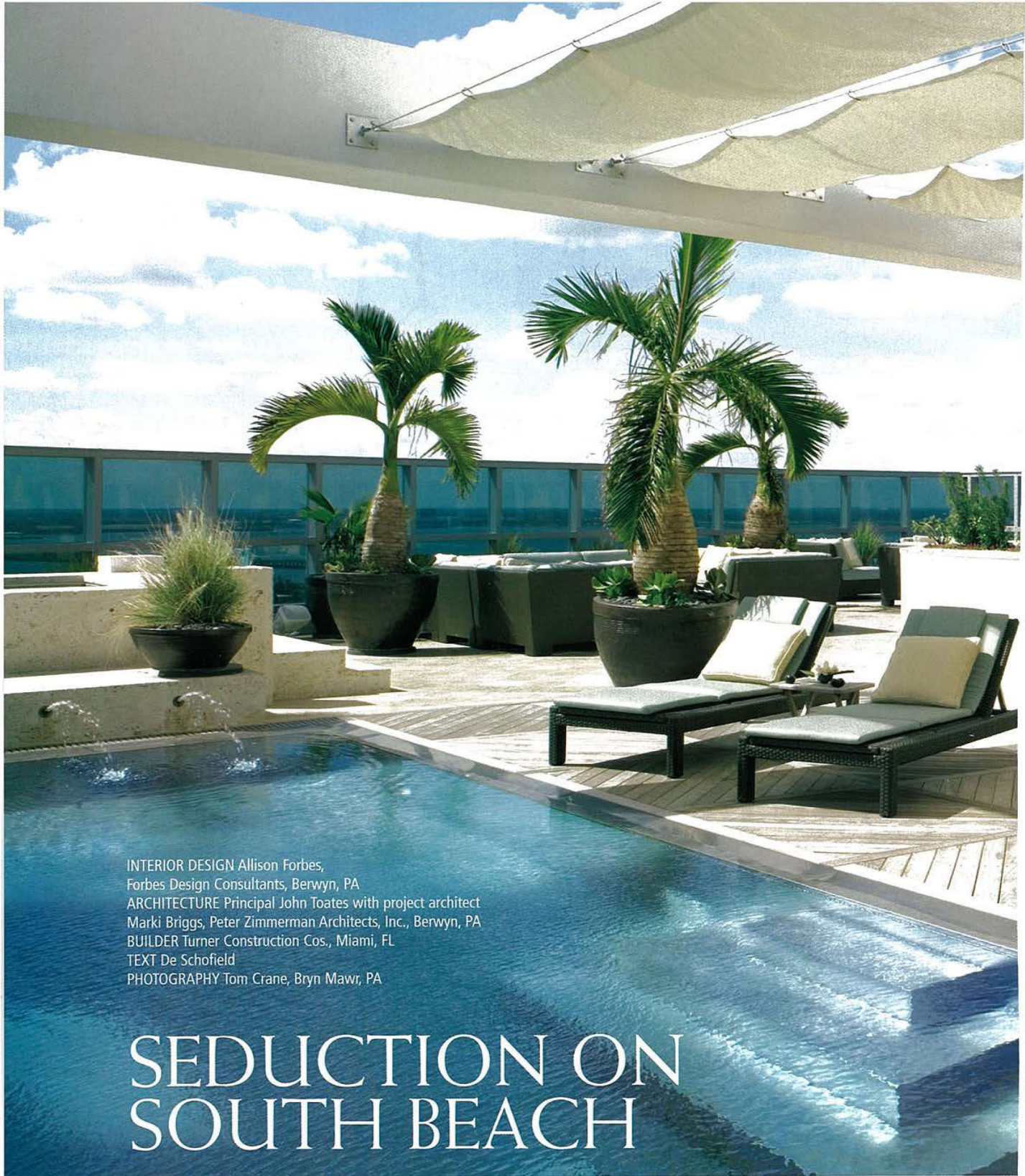
Wood ceilings and doors fabricated by Cayman National Manufacturing and Installation, Inc., Deerfield Beach, FL

Ornamental cast-plaster ceilings fabricated by Felber Ornamental Plastering Corp., Norristown, PA  
 Recessed lighting - Grenald Waldron Associates, Narberth, PA

Venetian plaster - Venucci Walls, Inc., Plantation, FL  
 Florals and greenery - Gold Leaf Design Group, Inc., Chicago, IL

Wood flooring - Quality Floor Covering, Inc., Wichita, KS

Tile and marble flooring - Devon Tile & Design Studio, Devon, PA ♦



INTERIOR DESIGN Allison Forbes,  
Forbes Design Consultants, Berwyn, PA  
ARCHITECTURE Principal John Toates with project architect  
Marki Briggs, Peter Zimmerman Architects, Inc., Berwyn, PA  
BUILDER Turner Construction Cos., Miami, FL  
TEXT De Schofield  
PHOTOGRAPHY Tom Crane, Bryn Mawr, PA

# SEDUCTION ON SOUTH BEACH

Architecture Meets Design In An Asian and Art Deco-Inspired  
Penthouse Offering 360-Degree Panoramas Of Miami



ABOVE: The architectural team custom designed adjustable canopy sails that provide privacy and shelter from the sun on the rooftop terrace — making it ideal for photo shoots and gala events, such as last year's MTV Music Awards party. The penthouse and terrace can be rented for \$25,000 per night.

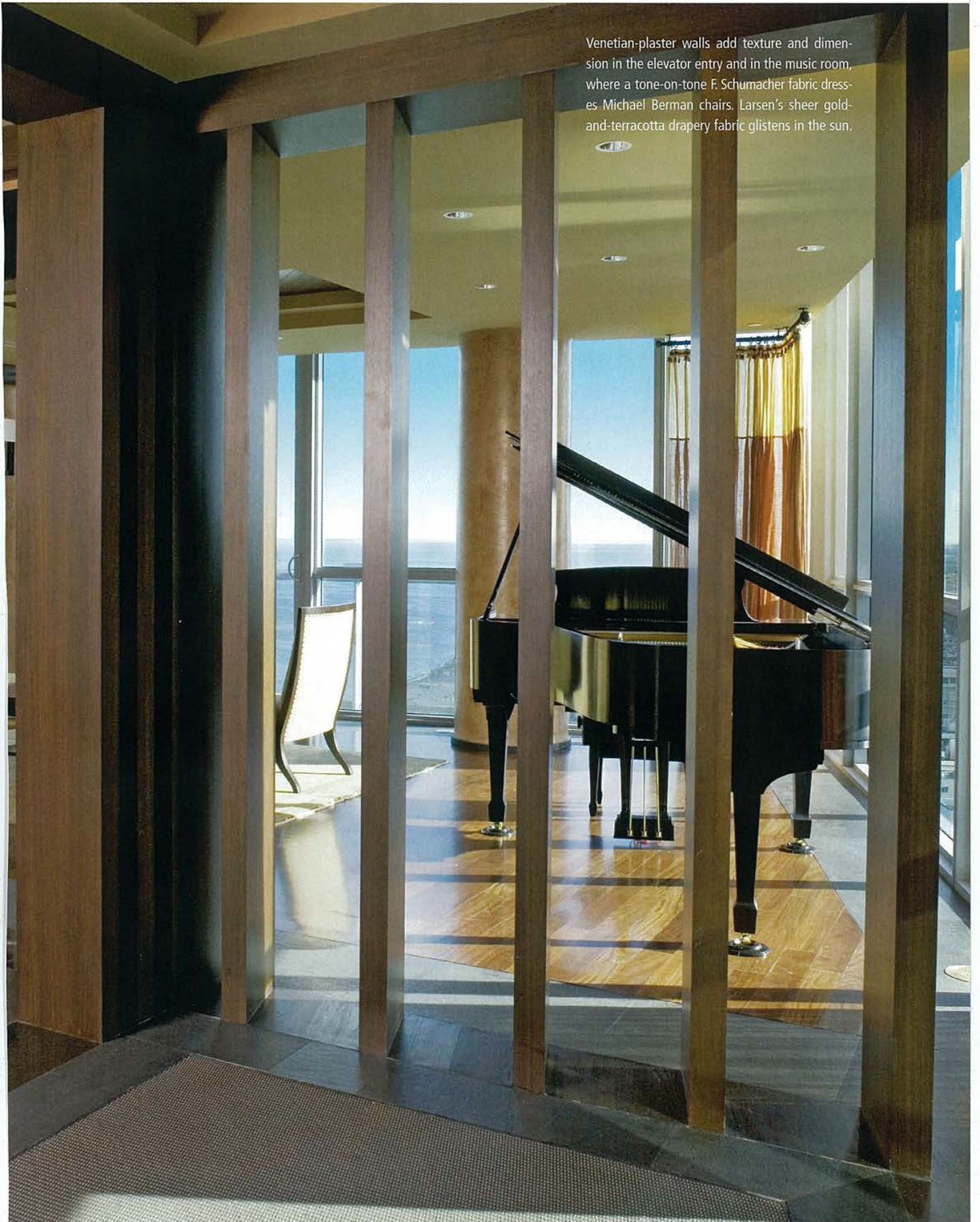
A signed and numbered print by Jamali, "Shanidar," adds an Asian flair in the elevator entry.



**MILLIONAIRES ROW ON COLLINS** Avenue in South Beach is home to The Setai, a five-star oceanfront hotel and residence whose dramatic vantage points of Miami and the Atlantic Ocean seduced a Northeast couple into combining its two 40th-floor penthouses into a one-of-a-kind property. Having worked with designer Allison Forbes and architect John Toates on previous projects, the owners knew that the duo could once again achieve their desired look. "Our objective was to blend the building's strong architectural presence with the breathtaking beauty of the Miami coastline," Forbes says.



Venetian-plaster walls add texture and dimension in the elevator entry and in the music room, where a tone-on-tone F. Schumacher fabric dresses Michael Berman chairs. Larsen's sheer gold-and-terracotta drapery fabric glistens in the sun.





## "THE RELATIONSHIP OF INSIDE TO OUTSIDE

The owners, who use the penthouse as a vacation getaway, agreed to offer the space as part of the hotel's rental pool. With this in mind, Forbes and Toates transformed the 6,500-square-foot unit with 3,000-square-foot private rooftop terrace into an Art Deco-Asian retreat that satisfies the owners' tastes while complementing The Setai's aesthetic.

"The owners should never feel that they are in a hotel, and guests should never feel that they're invading someone's private home," Toates says. To capture the look, carefully selected pieces in neutral silks, suede and velvet combine with exotic woods, rich architectural details and spicy hues.

Working in collaboration with Forbes and project





The double living room — composed of A. Rudin sofas, chairs and ottomans in Cowtan & Tout fabrics — features a wood-beamed coffered ceiling with a herringbone pattern that adds depth to the expanse of glass walls.

## IS CRITICAL," DESIGNER ALLISON FORBES SAYS.

architect Marki Briggs, Toates redesigned the layout, positioning the main living areas around the perimeter of the unit to take advantage of the 360-degree panoramas through the walls of glass.

Tinted-blue glass forms a balcony railing on the rooftop terrace — a modern tropical escape with an infinity-edge, stainless-steel pool and raised coral-

stone Jacuzzi. The design team refurbished the pool deck with exotic South American hardwood and created a fountain wall made of coral stone. Furniture with ocean-blue cushions provides the foundation for an interior palette touched with sea and sky.

Asian motifs begin in the elevator entry with a mahogany table anchoring a centerpiece of orchids.

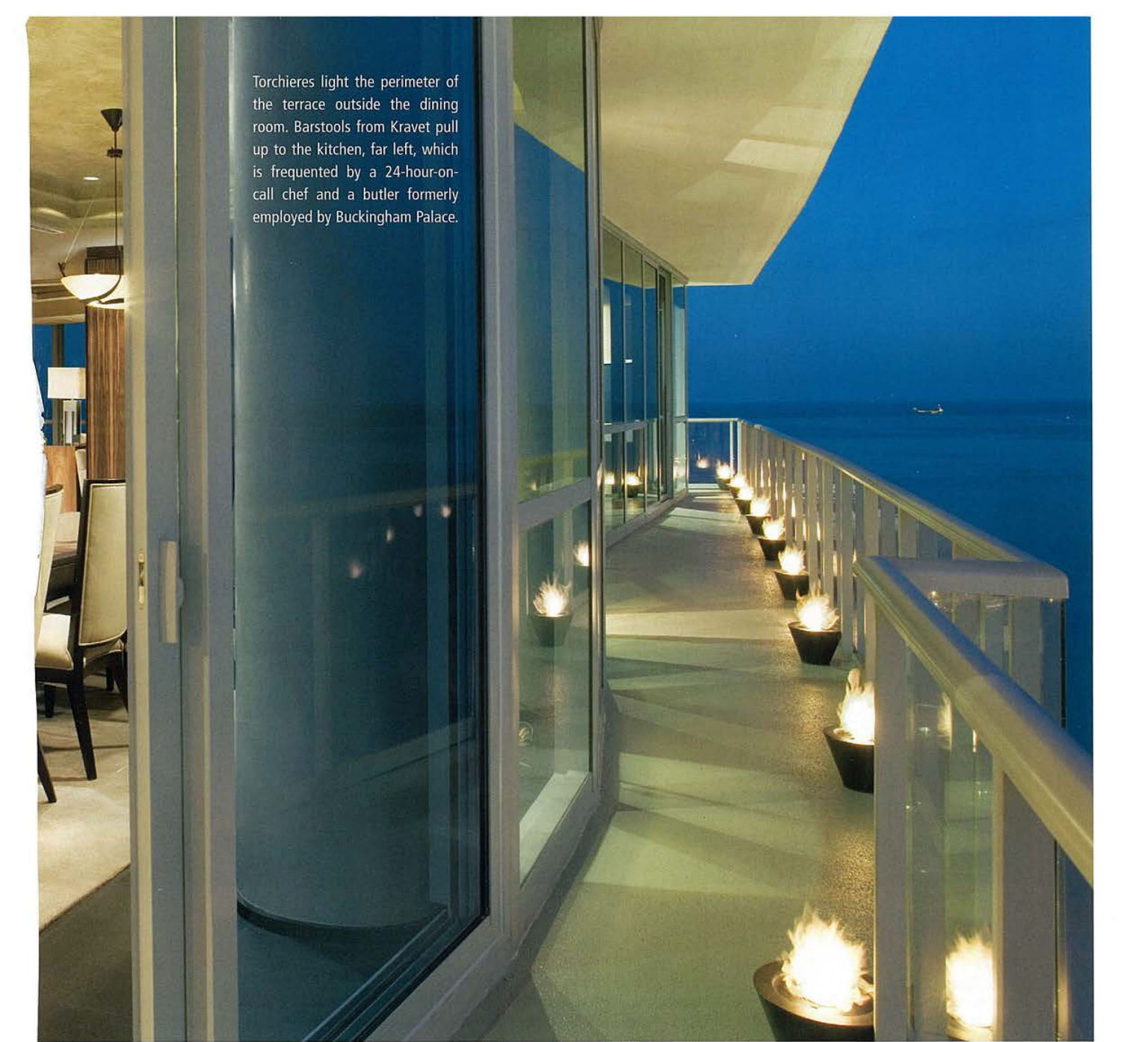


BELOW: A Holly Hunt light fixture introduces a phone area that serves as a lingering spot — “an interlude where one can take a break from the crowd or make a private phone call,” Forbes says. David Skinner’s “Overhill” integrates the scheme.



Teak millwork frames the doorways, serving as a defining architectural element, while visually connecting the rooms. To the right, angled teakwood fins allow glimpses of the music room. “The idea was to convey that this was a full-floor apartment with spectacular views in all directions,” Briggs says, “yet allowing that view to gradually unfold.”

Flamed-granite flooring in the elevator entry transitions to highly polished cumaru wood in the music room, where four Deco-style chairs seat an audience opposite the piano. An understated color scheme



Torchieres light the perimeter of the terrace outside the dining room. Barstools from Kravet pull up to the kitchen, far left, which is frequented by a 24-hour-on-call chef and a butler formerly employed by Buckingham Palace.

translates in the tone-on-tone honey chair fabric.

Subdued hues and cumaru flooring continue in the double living room, which features mirrored conversation groupings. Russet-toned Tibetan area rugs bring rich color to the otherwise neutral composition.

While a wood-beamed coffered ceiling defines the living room, a coffered ceiling outlines the dining room. Here, zebrawood paneling and a wine wall make a strong architectural statement. In the center of the space, a Macassar-ebony table reflects Art Deco design, while chairs with a coral pod

medallion reference Asian motifs. Nearby, a phone area offers privacy when making a call.

At the owners' request, Toates configured two full-size master suites separated by a wide sitting area. Taking inspiration from the scenic views, sky blue washes over one of the suites. Both bedrooms feature pocket doors that close for privacy when the penthouse is used as a hotel suite.

Subtle yet extravagant, this quintessential penthouse reflects the harmonious collaboration between design and architecture.